

ART-IN-SITE

Recent Projects by Chandra Cerrito / Art Advisors

Public Art

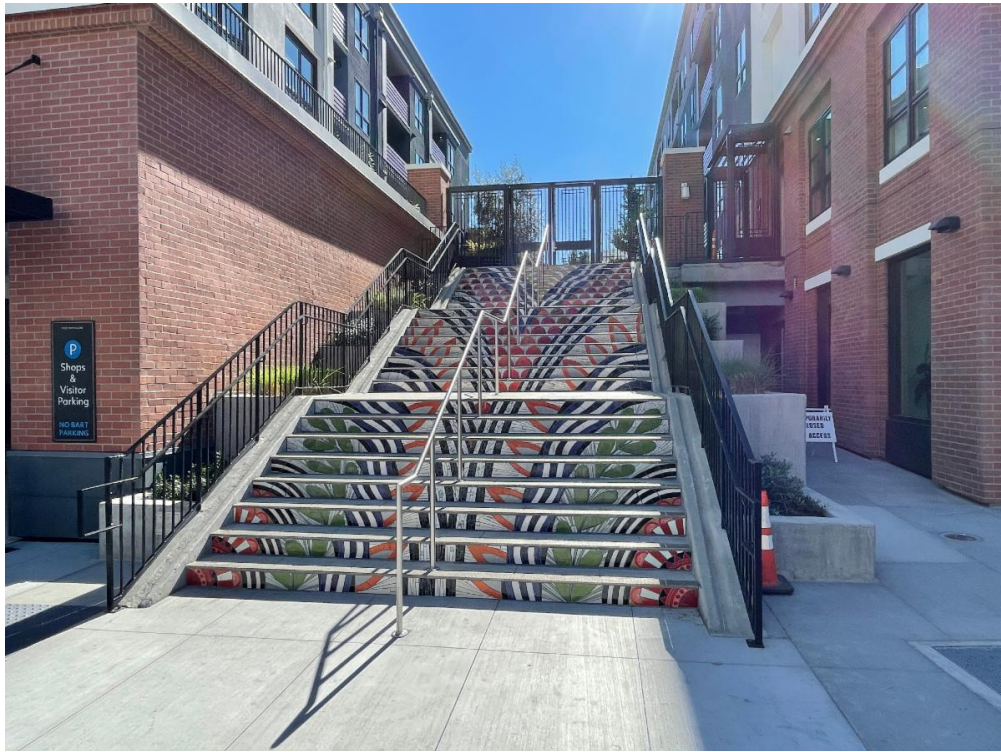
Walnut Creek Transit Village Parcel 2, Walnut Creek



Aileen Barr, *The Waymark Mosaics*, 2022. Handmade ceramic tile and mosaic.

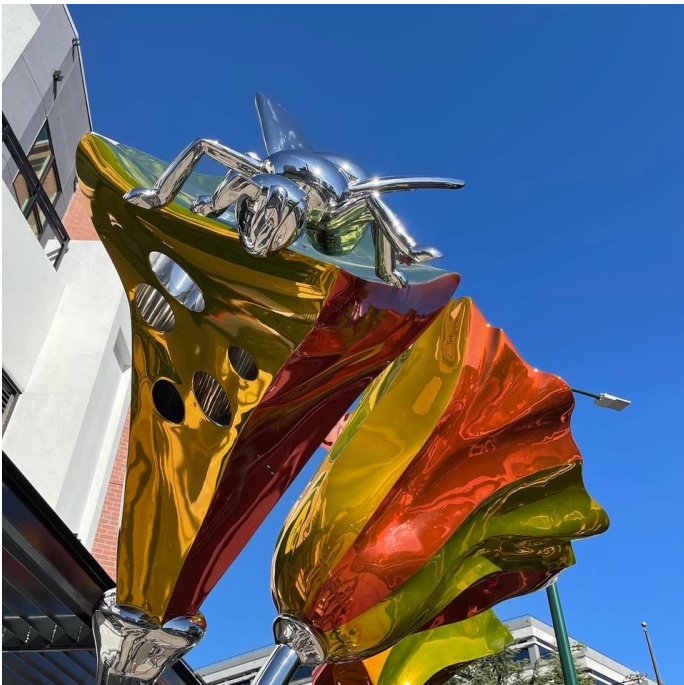
Chandra Cerrito / Art Advisors has been honored to continue working with the Walnut Creek Transit Village development team to expand the public art program at a beautiful new residential and mixed-use development surrounding the Walnut Creek BART station. In addition to collaborating with the developer and their design team, CC/AA also worked closely with City staff and commissioners to develop an art plan and artwork proposals that would benefit both project occupants and the general public.

Artworks by **Aileen Barr** and artist team **Brad Oldham** and **Christy Coltrin** enliven the site's outdoor spaces. **Barr's multi-element mosaic artwork** (above and below) leads people up a grand stairway at Pringle Avenue, through a "paseo" that meanders between residential buildings, and into a courtyard in which residents and BART riders are able to rest and gather. Brightly colored, intricately textured ceramic tiles, handmade by the artist, create beautiful abstract patterns that mix references to local natural elements and transportation. Threading through the landscape design, the artwork adorns stair treads, benches, tree planters, and gateway columns.



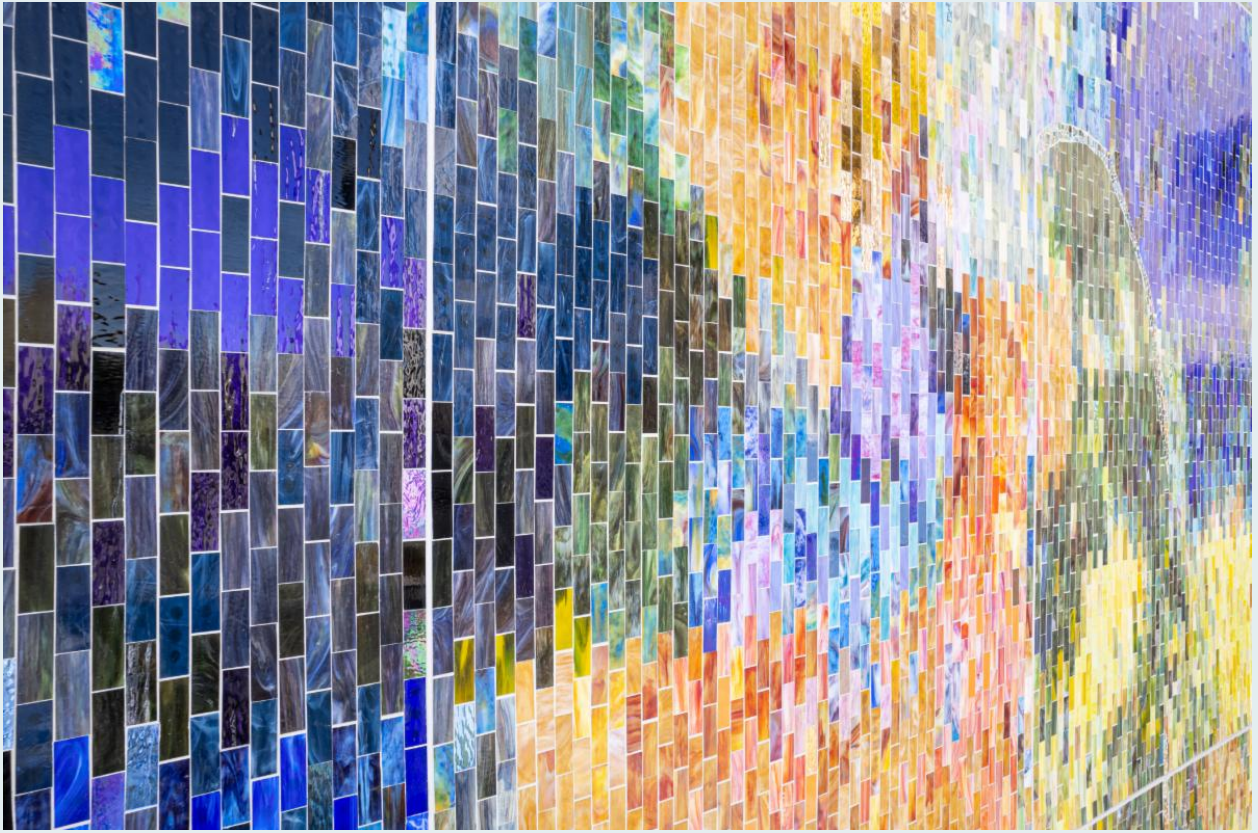
Aileen Barr, *The Waymark Mosaics*, 2022. Handmade ceramic tile and mosaic.

Oldham and Coltrin's artwork, *The Bee Effect* (below), is a delightful landmark at the prominent corner of Pringle and North California Boulevard. Visible from nearby streets, sidewalks, and the BART train, this mirror-polished stainless-steel sculpture features monumental poppy flowers, two pollinating bees, and "sky tubes" through which one is invited to view the sky via openings in the flower petals. The artists imagined this dramatic bouquet resulting from a gust of wind that carried a small poppy seed from Mount Diablo to this corner, where it was nurtured and thrived, a metaphor for the positive impact each of us may have on the world when we share "sparks of goodness."



Brad Oldham and Christy Coltrin, *The Bee Effect*, 2022. Stainless steel.

Vespr, Oakland

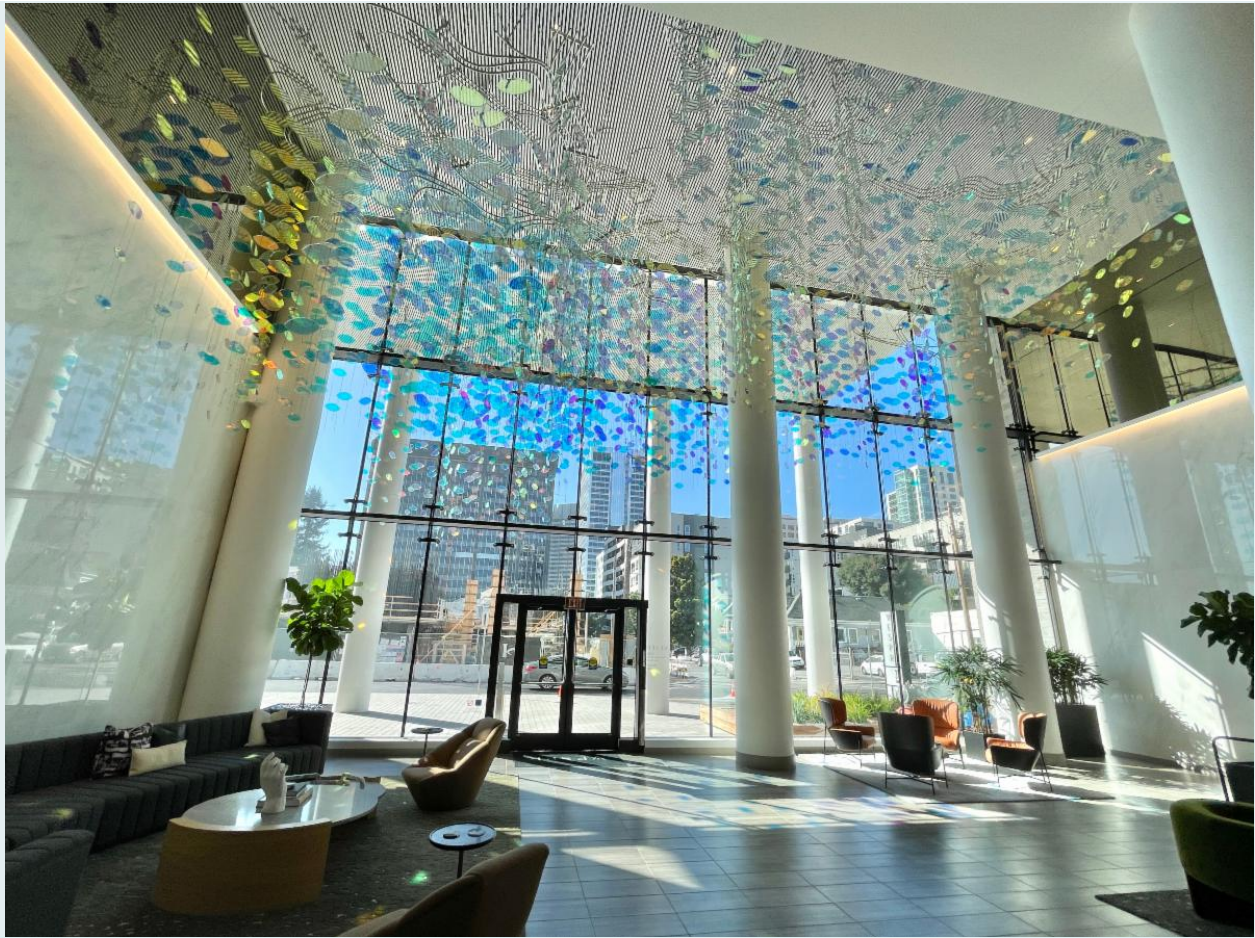


WOWHAUS, *Quercus*, 2021. Hand-cut glass mosaic. Detail (above); installation view (below).

Two monumental artworks, a mosaic by **WOWHAUS (Scott Constable and Ene Oстераas-Constable)** and a suspended glass sculpture by **Ray King**, were commissioned as part of the developer's public art in private development requirement for this beautiful new residential tower in Oakland. Chandra Cerrito / Art Advisors started working with the development and design team in 2017 to help determine locations, select artists, oversee conceptual designs, manage the city approval process, and facilitate coordination among artists, architects, and building contractors. After many years, it is wonderful to finally see this project finished.

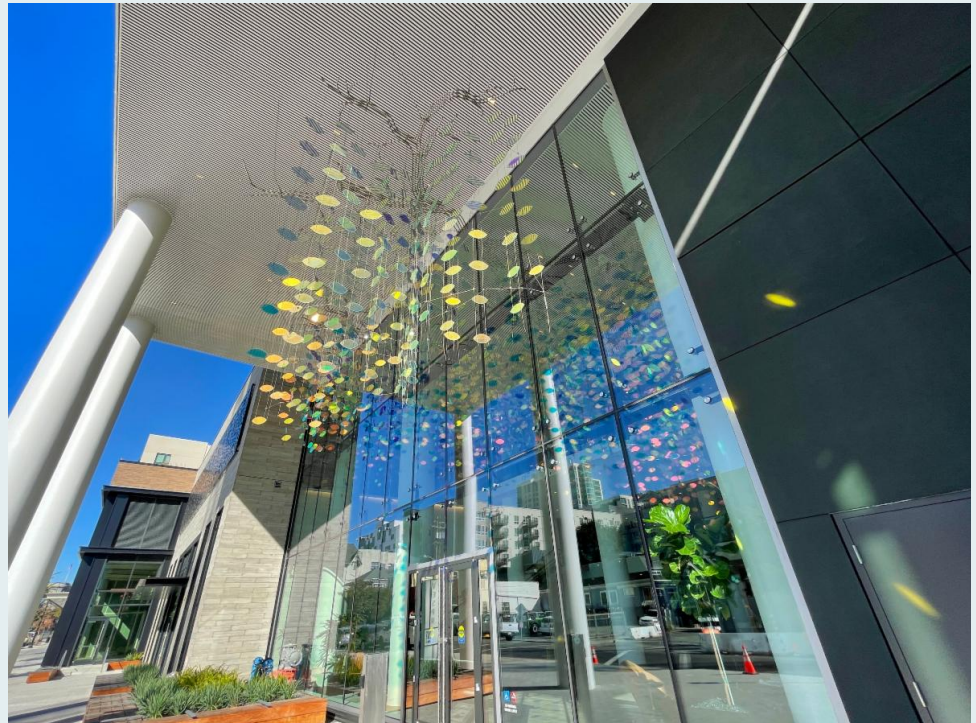


Quercus, a hand-cut glass mosaic by **WOWHAUS** (above), appears abstract but is inspired by the microscopic image of an acorn, a reference to Oakland's namesake tree. Dominating a four-story wall at the end of a narrow pocket park, the artwork radiates color and shimmers in the light, creating a unique and celebratory sense of place.



Ray King, *Golden Wave*, 2022. Laminated dichroic glass, stainless steel. Interior view (above); exterior view (below).

Ray King's *Golden Wave* (above and right), comprised of thousands of dichroic glass elements suspended from a stainless-steel armature, extends from outside the main entrance into the building lobby on either side of a glass curtain wall, connecting outside and inside. The glass elements on cables move like leaves in the wind, changing color from gold to blue, depending on the viewer's angle, and casting swatches of color onto the floor below. Never static, the artwork is like a river flowing through and animating the space.



UCSF Block 34 Parking Structure, San Francisco



Kota Ezawa, *Peace Piece*, 2022. Print on architectural mesh.

University of California San Francisco's design team saw an opportunity for artwork on the façade of a new parking structure serving adjacent medical buildings in Mission Bay. The architects specified a seven-story high 20-foot-wide architectural mesh panel to shield the elevator shaft on the busy 3rd Street side of the building. This mesh would become a canvas onto which an artist's site-specific image would be printed for a long-term installation.

Chandra Cerrito / Art Advisors was hired to lead artist selection and contracting, oversee artwork design and approval, and help coordinate with construction. Through a robust artist selection process involving numerous stakeholders – architects, project administrators, UCSF leadership representatives, doctors, and patient experience experts – UCSF selected the acclaimed Bay Area artist **Kota Ezawa**. It was a delight and an honor to work with Ezawa. Over a series of highly engaged design reviews, he presented and refined the ultimate design entitled ***Peace Piece***, an uplifting image of a boy flying a kite emblazoned with two dove icons. The artwork's sky is transformed with colorful concentric circles inspired by an abstract work by 20th century artist Sonia Delauney. Facing the children's hospital across 3rd Street and adjacent to a new clinic building, this artwork is both a neighborhood landmark and a source of hope for patients, their families, and caregivers.

Technology Company Humboldt Campus, Sunnyvale



Po Shu Wang, *Info \leftrightarrow Noise*, 2022. Stainless steel, sound, LEDs, custom electronics.

Chandra Cerrito / Art Advisors had the pleasure of working with a global technology company to provide public art at one of their new corporate campuses in Sunnyvale. The new campus consists of four buildings at the end of Humboldt Court, which culminates in a cul-de-sac, beyond which the artwork is prominently installed at the campus's main entrance. CC/AA helped create an art plan, led the artist selection and conceptual design review process, managed the City approval process, and facilitated the installation of a multi-media interactive artwork by Bay Area artist **Po Shu Wang**.

Wang's artwork entitled *Info \leftrightarrow Noise* explores the concept that what we consider information is only different from its surrounding field of sensory noise because it is something that is of use to us, and, therefore, worth our attention and articulation as something distinctive. A large stainless-steel sculpture in the shape of a crumpled piece of paper or a craggy mountain, depending on your point of view, is at the center of a circular pathway and surrounded by a low railing that houses both light fixtures and audio speakers. As one walks along the path, ethereal music is activated, and, if one lingers at certain unmarked locations, the flickering pattern of white light shifts to one of seven colors that chases around the circular railing, casting a tinted glow. Without providing overt instructions for activating the light and sound elements, Wang anticipates that those who interact with the artwork over time may discover its triggers and reactions, inspiring participants to orchestrate unique compositions. In doing so, something orderly and meaningful will be created out of something that may first be experienced as chaos or meaningless "noise."

CC/AA Supports

We at Chandra Cerrito / Art Advisors strive to contribute excellence in our field, to promote opportunities for artists, and to foster relationships based on respect and trust. In addition, we aim to support others in our community and beyond who are making a positive difference in the world.

One organization we celebrate is **Lava Mae^x**. LavaMae^x is a nonprofit that teaches and funds organizations around the world to bring mobile showers and other services that promote well-being to people experiencing homelessness. They also deliver services on the streets of San Francisco, Oakland and Los Angeles, where their Radical Hospitality® approach—meeting people wherever they are with extraordinary care—helps restore dignity, rekindle optimism and fuel a sense of opportunity. Learn more at <https://lavamaex.org/>.



Image credit to LavaMae^x (lavamaex.org).

Another organization we celebrate is **Richmond Art Center**. Richmond Art Center has been sharing art and creating with community since 1936. Their programs encompass classes, exhibitions, and events at their facility, as well as off-site activities that bring free, high-quality art making experiences to WCCUSD schools, community centers, and Richmond Public Library. Learn more at <https://richmondartcenter.org/>.



Image credit to Richmond Art Center (<https://richmondartcenter.org/>).

Emergent Art Space is a platform for young artists across the globe. Emergent Art Space believes that the language of art has the power to communicate across geographic and cultural distances, to open new perspectives on our experience in the world, to facilitate the understanding of experiences and traditions different from our own. Founded in 2012, Emergent Art Space is an international non-profit organization based in San Francisco. They welcome artists in all fields of visual arts, still in school or under 30 years old.

Learn more at <https://emergentartspace.org/>.



Suresh Kumar Singha, Landscape from my memory. Ink on paper. Image credit to Emergent Art Space (emergentartspace.org).