

ART-IN-SITE

Recent Projects by Chandra Cerrito / Art Advisors

Public Art, Lydian Apartments, Oakland



Among by Julie Chang

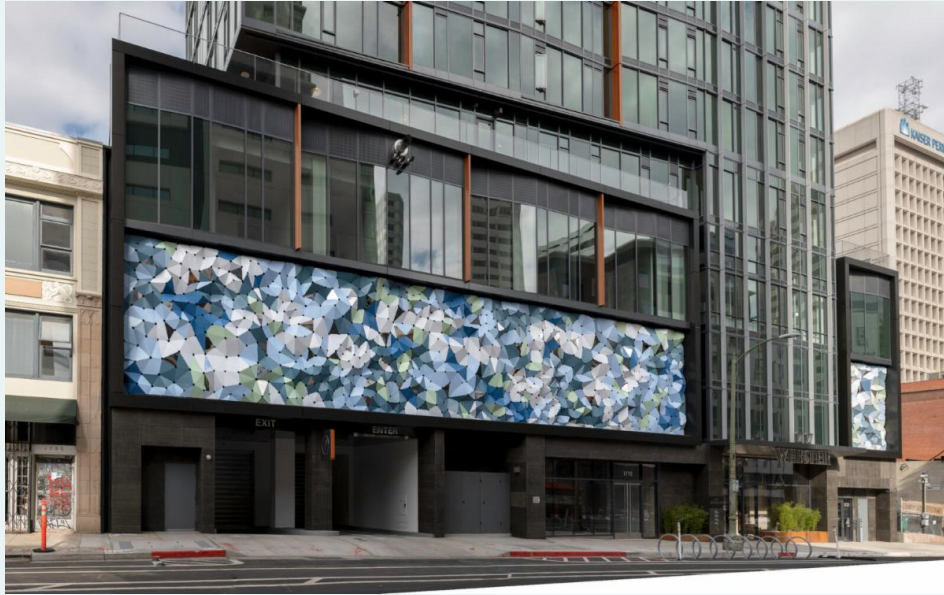
Chandra Cerrito / Art Advisors was honored to work with the developer, design team, and community stakeholders to select an artist, oversee conceptual design, obtain City approval, coordinate integration into the building, and facilitate the installation of Julie Chang's artwork, *Among*.

Located along 13th Street in downtown Oakland, *Among* is incorporated into the insulated glass units that make up the storefront of the Lydian Apartments, a new residential building with ground floor retail spaces. Passing vehicles and neighbors across the way can view the ebb and flow of imagery along the length of the windows. Pedestrians are able to explore the abstraction that occurs through the physical layering of imagery and discover the hidden patterns within the work.

When considering the site's location adjacent to both Chinatown and the Black Arts Movement Business District, Chang decided to weave together graphic images based on distinct yet familiar cultural icons, creating a metaphor for social and political harmony. Bamboo holds significance in both Chinese and Japanese culture, representing the spirit of integrity, loyalty and the ability to spring back after diversity. The mathematical tessellations of an Islamic pattern speaks to transformation and the impermanence of the physical world.

The African Ankara or Dutch Wax print pattern holds a shape that might be interpreted as a UFO, which works as a playful metaphor for the experience of alienation in the pursuit of belonging. Together human perspectives are combined and interwoven. Symbols migrate and cross boundaries, transformed by encounters with other forms. Layered glass holds these elements together encouraging discovery while celebrating difference, connection and understanding.

Public Art, The Webster, Oakland



Street Scene by Rob Ley

It was a pleasure for CC/AA to facilitate the artist selection, conceptual design, city approval, construction coordination, and installation of a monumental public artwork by artist Rob Ley. Located at a new residential tower on Webster Street in Oakland, *Street Scene* is a powder-coated aluminum relief sculpture mounted on two sections of the building facade. One section is 87' wide x 17'-4" tall and the other section is 16'-6" wide x 17'-4" tall. The significant scale and location of the artwork along the second and third stories allows for an engaging experience for pedestrians as well as those traveling by car, bus, or bicycle.

The artwork acts as a faceted color relief and mirror of its environment. It is comprised of hundreds of bent aluminum metal panels—blue, green, gray, and mirror-polished triangular and diamond shaped elements—that are composed into a subtle terrain and framed by the architectural elements of the building. Due to the scattered arrangement and varying angles of the reflective components, at any given time this dynamic artwork will reflect small moments of the sky, the surrounding foliage along the street, and the varied activity below.

CC/AA Supports

We at Chandra Cerrito / Art Advisors strive to contribute excellence in our field, to promote opportunities for artists, and to foster relationships based on respect and trust. In addition, we aim to support others in our community and beyond who are making a positive difference in the world.

One organization we celebrate is the **Chinese Historical Society of America**. The Chinese Historical Society of America collects, preserves, and illuminates the history of Chinese in America by serving as a center for research, scholarship and learning to inspire a greater appreciation for, and knowledge of, their collective experience through exhibitions, public programs, and any other means for reaching the widest audience.

Click [here](#) for more information



CHINESE HISTORICAL SOCIETY OF AMERICA

The Sandra Vivanco Diversity Scholarship at California College for the Arts. The Sandra Vivanco Diversity Scholarship will support CCA diversity students with a focus on women of color, non-binary, transgender, and DACA/Dreamer students in financial need across all divisions of the college. Educating the next generation of creative leaders has never been more critical to the well-being and success of society. Equipping young people with creativity, resiliency, innovation, and compassion is essential for reimagining, rebuilding, and restoring our world in the face of the COVID-19 global crisis.

Sandra Vivanco, professor in the CCA Architecture Division and Critical Ethnic Studies Program, taught at CCA for more than two decades and embodied much of what we value about our CCA community. A passionate educator, she was deeply committed to her students, her colleagues, and her community. Her lifetime of advocacy for, and support of, underserved and underrepresented communities challenges us all to be better and do better. Gifts to Sandra Vivanco Diversity Scholarship will make a direct impact on students, sustaining them through this difficult time and inspiring them to create positive change.

Click [here](#) for more information

"Sandra was a consummate educator and an accomplished professional whose practice epitomized her values, and a tireless advocate for diversity and equity in her community and her field."

Stephen Beal
CCA President

